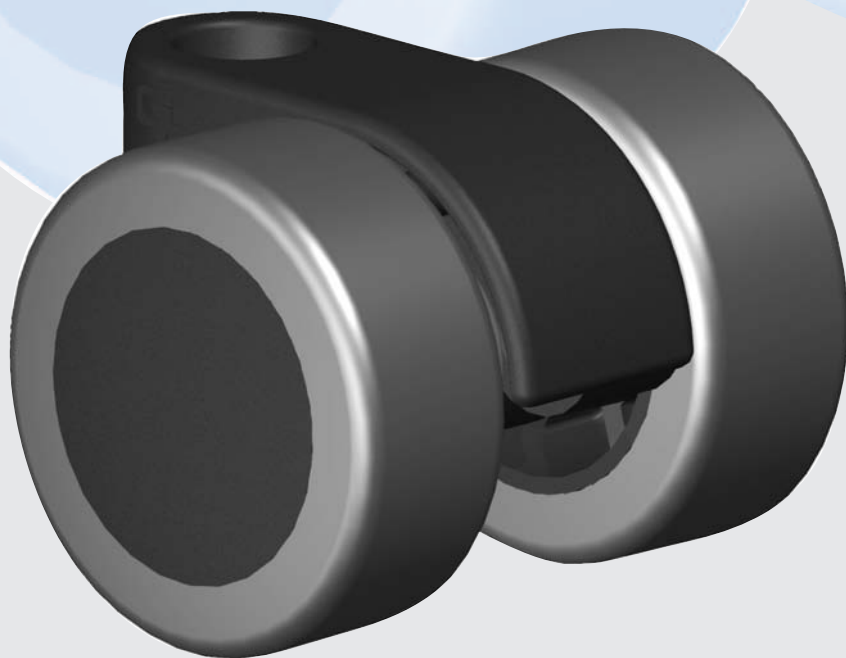


GUY-RAYMOND

NEW • NEU • NOUVEAU • NUEVO



GRX30

GRX30 CASTOR

SPECIFICATION

CASTOR TYPE

GRX30 Swivel

MATERIALS

Castor PA

Soft Tyre PUR

STANDARD COLOURS

Black

STANDARDS

EN 12528

TECHNISCHE DATEN

ROLLEN TYP

GRX30 Lenkrolle

MATERIAL

Rollen PA

Weiche Lauffläche PUR

STANDARDFARBEN

Schwarz

NORMEN

EN 12528

SPECIFICATION

TYPE DE ROULETTE

GRX30 Pivotante

MATIERES

Roulette PA

Bandes Souples PUR

COLORIS STANDARD

Noir

NORMES

EN 12528

ESPECIFICACION

TIPO DE RUEDA

GRX30 Giratoria

MATERIALES

Rueda Nilón

Rodadura Blanda Poliuretano

COLORES ESTANDAR

Negro

NORMAS

EN 12528



30



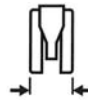
30



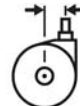
14



9.5



40



15



35



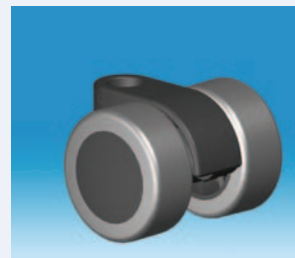
40kg

NO.

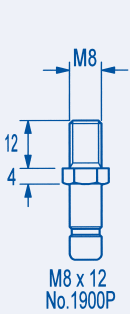
4100-1-1U

GRX30 SOFT TYRE

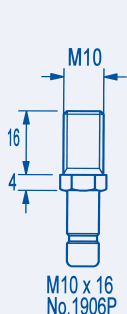
BLACK - SOFT TYRE



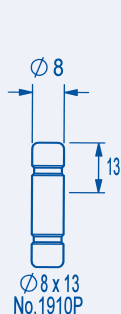
GRX30 FITTINGS



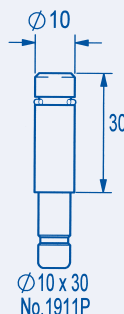
M8 x 12
No. 1900P



M10 x 16
No. 1906P



Ø8 x 13
No. 1910P



Ø10 x 30
No. 1911P

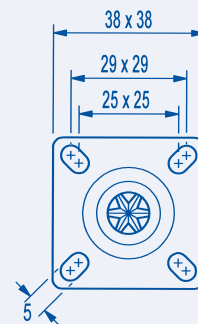


PLATE FIXING
No. 1902-9209

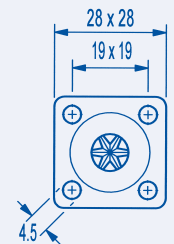


PLATE FIXING
No. 1901-9231



15mm "U" BRACKET
No. 9200-1901



18mm "U" BRACKET
No. 9201-1901

