

# GUY-RAYMOND



**GRX65 C-LINE**  
Rollen ■ Roulettes ■ Ruedas

# GRX6518 C-LINE & GRX6518FB WHEEL BRAKE C-LINE CASTORS

## SPECIFICATION

### CASTOR TYPE

Swivel  
Wheel Brake

### MATERIALS

Castor PA  
Soft Tyre PUR

### STANDARD COLOURS

Black  
Aluminium RAL 9006

### STANDARDS

EN 12528

## TECHNISCHE DATEN

### ROLLEN TYP

Lenkrolle  
Radfeststeller

### MATERIAL

Rollen PA  
Weiche Lauffläche PUR

### STANDARDFARBEN

Schwarz  
Aluminium RAL 9006

### NORMEN

EN 12528

## SPECIFICATION

### TYPE DE ROULETTE

Pivotante  
Blocage de Roue

### MATIERES

Roulette PA  
Bandes Souples PUR

### COLORIS STANDARD

Noir  
Alu RAL 9006

### NORMES

EN 12528

## ESPECIFICACION

### TIPO DE RUEDA

Giratoria  
Freno de Rueda

### MATERIALES

Rueda Nilón  
Rodadura Blanda Poliuretano

### COLORS ESTANDAR

Negro  
Plateado RAL 9006

### NORMAS

EN 12528



65



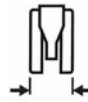
66



18



7



49



22.5



58 & 76



50kg

### NO.

6000-1-1U-K  
6003-1-1U-K  
6008-1-1U-K  
6001-1-1U-K  
6002-1-1U-K  
6036-1-1U-K  
6004-1-1U-K  
6051-1-1U-K



-----  
Ø 11 x 22mm  
Ø 10 x 22mm  
Ø 10 x 30mm  
M10 x 15mm  
M12 x 20mm  
38 x 38mm Plate  
42 x 42mm Plate

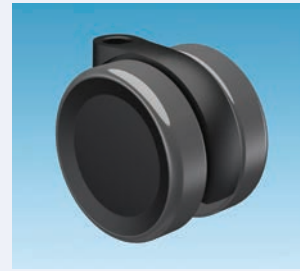


66  
69.5  
69.5  
66  
72.5  
72.5  
74.5  
74.5



-  
22  
22  
30  
15  
20  
-  
-

### BLACK - SOFT TYRE GRX6518 C-LINE



### NO.

6000-64-64-T1U-K  
6003-64-64-T1U-K  
6008-64-64-T1U-K  
6001-64-64-T1U-K  
6002-64-64-T1U-K  
6036-64-64-T1U-K  
6004-64-64-T1U-K  
6051-64-64-T1U-K

-----  
Ø 11 x 22mm  
Ø 10 x 22mm  
Ø 10 x 30mm  
M10 x 15mm  
M12 x 20mm  
38 x 38mm Plate  
42 x 42mm Plate

66  
69.5  
69.5  
66  
72.5  
72.5  
74.5  
74.5

-  
22  
22  
30  
15  
20  
-  
-

### RAL 9006 - SOFT TYRE GRX6518 C-LINE



### NO.

5100-1-1U-K  
5103-1-1U-K  
5108-1-1U-K  
5101-1-1U-K  
5102-1-1U-K  
5136-1-1U-K  
5104-1-1U-K  
5151-1-1U-K

-----  
Ø 11 x 22mm  
Ø 10 x 22mm  
Ø 10 x 30mm  
M10 x 15mm  
M12 x 20mm  
38 x 38mm Plate  
42 x 42mm Plate

66  
69.5  
69.5  
66  
72.5  
72.5  
74.5  
74.5

-  
22  
22  
30  
15  
20  
-  
-

### BLACK - SOFT TYRE GRX6518FB C-LINE



### NO.

5100-64-64-T1U-K  
5103-64-64-T1U-K  
5108-64-64-T1U-K  
5101-64-64-T1U-K  
5102-64-64-T1U-K  
5136-64-64-T1U-K  
5104-64-64-T1U-K  
5151-64-64-T1U-K

-----  
Ø 11 x 22mm  
Ø 10 x 22mm  
Ø 10 x 30mm  
M10 x 15mm  
M12 x 20mm  
38 x 38mm Plate  
42 x 42mm Plate

66  
69.5  
69.5  
66  
72.5  
72.5  
74.5  
74.5

-  
22  
22  
30  
15  
20  
-  
-

### RAL 9006 - SOFT TYRE GRX6518FB C-LINE



Ø 11 x 22mm



Ø 10 x 22mm



Ø 10 x 30mm



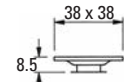
M10 x 15mm



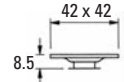
M12 x 20mm



38 x 38 mm Plate



42 x 42mm Plate



# GRX6528 C-LINE & GRX6528FB WHEEL BRAKE C-LINE CASTORS

## SPECIFICATION

### CASTOR TYPE

Swivel  
Wheel Brake

**MATERIALS**

Castor PA  
Soft Tyre PUR

### STANDARD COLOURS

Black  
Aluminium RAL 9006

### STANDARDS

EN 12528

## TECHNISCHE DATEN

### ROLLEN TYP

Lenkrolle  
Radfeststeller

### MATERIAL

Rollen PA  
Weiche Lauffläche PUR

### STANDARDFARBEN

Schwarz  
Aluminium RAL 9006

### NORMEN

EN 12528

## SPECIFICATION

### TYPE DE ROULETTE

Pivotante  
Blocage de Roue

### MATIERES

Roulette PA  
Bandes Souples PUR

### COLORIS STANDARD

Noir  
Alu RAL 9006

### NORMES

EN 12528

## ESPECIFICACION

### TIPO DE RUEDA

Giratoria  
Freno de Rueda

### MATERIALES

Rueda Nilón  
Rodadura Blanda Poliuretano

### COLORES ESTANDAR

Negro  
Plateado RAL 9006

### NORMAS

EN 12528



65



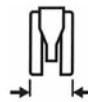
69



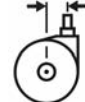
28



7



49



22.5



58 & 76



50kg

### NO.

3900-1-1U-K  
3903-1-1U-K  
3908-1-1U-K  
3901-1-1U-K  
3902-1-1U-K  
3936-1-1U-K  
3904-1-1U-K  
3951-1-1U-K



-----  
Ø 11 x 22mm  
Ø 10 x 22mm  
Ø 10 x 30mm  
M10 x 15mm  
M12 x 20mm  
38 x 38mm Plate  
42 x 42mm Plate



69  
71  
71  
69  
73.5  
73.5  
75.5  
75.5



-  
22  
22  
28.5  
15  
20  
-  
-

### BLACK - SOFT TYRE GRX6528 C-LINE



### NO.

3900-64-64-T1U-K  
3903-64-64-T1U-K  
3908-64-64-T1U-K  
3901-64-64-T1U-K  
3902-64-64-T1U-K  
3936-64-64-T1U-K  
3904-64-64-T1U-K  
3951-64-64-T1U-K

-----  
Ø 11 x 22mm  
Ø 10 x 22mm  
Ø 10 x 30mm  
M10 x 15mm  
M12 x 20mm  
38 x 38mm Plate  
42 x 42mm Plate

69  
71  
71  
69  
73.5  
73.5  
75.5  
75.5

-  
22  
22  
28.5  
15  
20  
-  
-

### RAL 9006 - SOFT TYRE GRX6528 C-LINE



### NO.

3800-1-1U-K  
3803-1-1U-K  
3808-1-1U-K  
3801-1-1U-K  
3802-1-1U-K  
3836-1-1U-K  
3804-1-1U-K  
3851-1-1U-K

-----  
Ø 11 x 22mm  
Ø 10 x 22mm  
Ø 10 x 30mm  
M10 x 15mm  
M12 x 20mm  
38 x 38mm Plate  
42 x 42mm Plate

69  
71  
71  
69  
73.5  
73.5  
75.5  
75.5

-  
22  
22  
28.5  
15  
20  
-  
-

### BLACK - SOFT TYRE GRX6528FB C-LINE



### NO.

3800-64-64-T1U-K  
3803-64-64-T1U-K  
3808-64-64-T1U-K  
3801-64-64-T1U-K  
3802-64-64-T1U-K  
3836-64-64-T1U-K  
3804-64-64-T1U-K  
3851-64-64-T1U-K

-----  
Ø 11 x 22mm  
Ø 10 x 22mm  
Ø 10 x 30mm  
M10 x 15mm  
M12 x 20mm  
38 x 38mm Plate  
42 x 42mm Plate

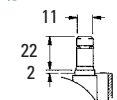
69  
71  
71  
69  
73.5  
73.5  
75.5  
75.5

-  
22  
22  
28.5  
15  
20  
-  
-

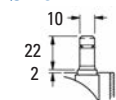
### RAL 9006 - SOFT TYRE GRX6528FB C-LINE



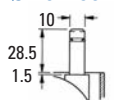
Ø 11 x 22mm



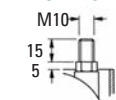
Ø 10 x 22mm



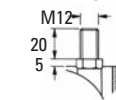
Ø 10 x 30mm



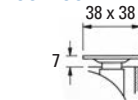
M10 x 15mm



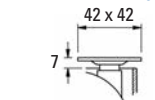
M12 x 20mm



38 x 38mm Plate



42 x 42mm Plate



# GRX6518 C-LINE & GRX6528 C-LINE CASTORS

## SPECIFICATION

### CASTOR TYPE

Swivel

### MATERIALS

Castor PA  
Soft Tyre PUR

### STANDARD COLOURS

Black  
Aluminium RAL 9006

### STANDARDS

EN 12529

## TECHNISCHE DATEN

### ROLLEN TYP

Lenkrolle

### MATERIAL

Rollen PA  
Weiche Lauffläche PUR

### STANDARDFARBEN

Schwarz  
Aluminium RAL 9006

### NORMEN

EN 12529

## SPECIFICATION

### TYPE DE ROULETTE

Pivotante

### MATIERES

Roulette PA  
Bandes Souples PUR

### COLORIS STANDARD

Noir  
Alu RAL 9006

### NORMES

EN 12529

## ESPECIFICACION

### TIPO DE RUEDA

Giratoria

### MATERIALES

Rueda Nilón  
Rodadura Blanda Poliuretano

### COLORES ESTANDAR

Negro  
Plateado RAL 9006

### NORMAS

EN 12529



65



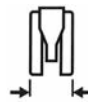
66 & 69



18 & 28



7



49



22.5



58



50kg



### NO.

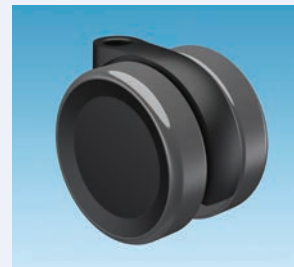
6000-1-1U-K  
6003-1-1U-K  
6008-1-1U-K  
6001-1-1U-K

-----  
Ø 11 x 22mm  
Ø 10 x 22mm  
Ø 10 x 30mm

66  
69.5  
69.5  
66

-  
22  
22  
30

### BLACK - SOFT TYRE GRX6518 C-LINE



### NO.

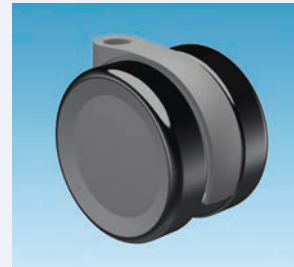
6000-64-64-T1U-K  
6003-64-64-T1U-K  
6008-64-64-T1U-K  
6001-64-64-T1U-K

-----  
Ø 11 x 22mm  
Ø 10 x 22mm  
Ø 10 x 30mm

66  
69.5  
69.5  
66

-  
22  
22  
30

### RAL 9006 - SOFT TYRE GRX6518 C-LINE



### NO.

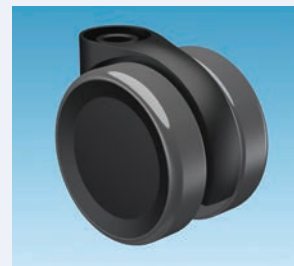
3900-1-1U-K  
3903-1-1U-K  
3908-1-1U-K  
3901-1-1U-K

-----  
Ø 11 x 22mm  
Ø 10 x 22mm  
Ø 10 x 30mm

69  
71  
71  
69

-  
22  
22  
28.5

### BLACK - SOFT TYRE GRX6528 C-LINE



### NO.

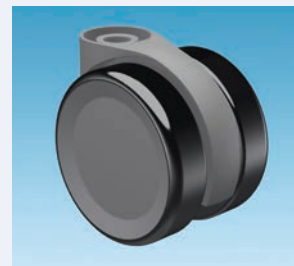
3900-64-64-T1U-K  
3903-64-64-T1U-K  
3908-64-64-T1U-K  
3901-64-64-T1U-K

-----  
Ø 11 x 22mm  
Ø 10 x 22mm  
Ø 10 x 30mm

69  
71  
71  
69

-  
22  
22  
28.5

### RAL 9006 - SOFT TYRE GRX6528 C-LINE



### GRX6518 C-LINE

Ø 11 x 22mm

Ø 10 x 22mm

Ø 10 x 30mm



### GRX6528 C-LINE

Ø 11 x 22mm

Ø 10 x 22mm

Ø 10 x 30mm



# GRX6536 C-LINE & GRX6541 C-LINE CASTORS

## SPECIFICATION

### CASTOR TYPE

Swivel

### MATERIALS

Castor PA  
Soft Tyre PUR

### STANDARD COLOURS

Black  
Aluminium RAL 9006

### STANDARDS

EN 12529

## TECHNISCHE DATEN

### ROLLEN TYP

Lenkrolle

### MATERIAL

Rollen PA  
Weiche Lauffläche PUR

### STANDARDFARBEN

Schwarz  
Aluminium RAL 9006

### NORMEN

EN 12529

## SPECIFICATION

### TYPE DE ROULETTE

Pivotante

### MATIERES

Roulette PA  
Bandes Souples PUR

### COLORIS STANDARD

Noir  
Alu RAL 9006

### NORMES

EN 12529

## ESPECIFICACION

### TIPO DE RUEDA

Giratoria

### MATERIALES

Rueda Nilón  
Rodadura Blanda Poliuretano

### COLORES ESTANDAR

Negro  
Plateado RAL 9006

### NORMAS

EN 12529



65



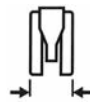
69



36 & 41



7



49



22.5



58



50kg



69



22

### NO.

5400-1-1U-K  
5403-1-1U-K  
5408-1-1U-K  
5401-1-1U-K

-----  
Ø 11 x 22mm  
Ø 10 x 22mm  
Ø 10 x 30mm

69

71

71

69

-

22

22

28.5

### BLACK - SOFT TYRE GRX6536 C-LINE



### NO.

5400-64-64-T1U-K  
5403-64-64-T1U-K  
5408-64-64-T1U-K  
5401-64-64-T1U-K

-----  
Ø 11 x 22mm  
Ø 10 x 22mm  
Ø 10 x 30mm

69

71

71

69

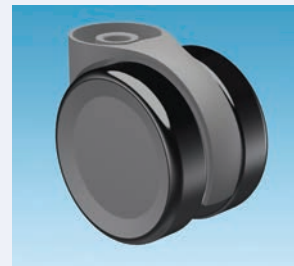
-

22

22

28.5

### RAL 9006 - SOFT TYRE GRX6536 C-LINE



### NO.

5600-1-1U-K  
5603-1-1U-K  
5608-1-1U-K  
5601-1-1U-K

-----  
Ø 11 x 22mm  
Ø 10 x 22mm  
Ø 10 x 30mm

69

71

71

69

-

22

22

28.5

### BLACK - SOFT TYRE GRX6541 C-LINE



### NO.

5600-64-64-T1U-K  
5603-64-64-T1U-K  
5608-64-64-T1U-K  
5601-64-64-T1U-K

-----  
Ø 11 x 22mm  
Ø 10 x 22mm  
Ø 10 x 30mm

69

71

71

69

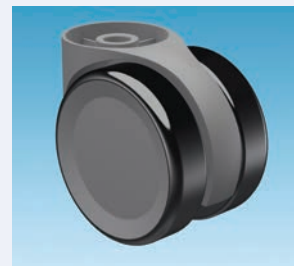
-

22

22

28.5

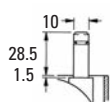
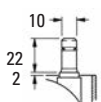
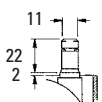
### RAL 9006 - SOFT TYRE GRX6541 C-LINE



Ø 11 x 22mm

Ø 10 x 22mm

Ø 10 x 30mm



# GRX6518BU C-LINE & GRX6528BU C-LINE BRAKE UNLOADED CASTORS

## SPECIFICATION

### CASTOR TYPE

Brake Unloaded

### MATERIALS

Castor PA  
Soft Tyre PUR

### STANDARD COLOURS

Black  
Aluminium RAL 9006

### STANDARDS

EN 12529 TYPE U

## TECHNISCHE DATEN

### ROLLEN TYP

Lastabhängig Gebremst

### MATERIAL

Rollen PA  
Weiche Lauffläche PUR

### STANDARDFARBEN

Schwarz  
Aluminium RAL 9006

### NORMEN

EN 12529 TYP U

## SPECIFICATION

### TYPE DE ROULETTE

Autofreiné

### MATIERES

Roulette PA  
Bandes Souples PUR

### COLORIS STANDARD

Noir  
Alu RAL 9006

### NORMES

EN 12529 TYPE U

## ESPECIFICACION

### TIPO DE RUEDA

Autofrenado

### MATERIALES

Rueda Nilón  
Rodadura Blanda Poliuretano

### COLORES ESTANDAR

Negro  
Plateado RAL 9006

### NORMAS

EN 12529 TIPO U



65



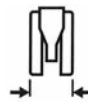
67 & 70



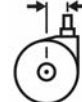
18 & 28



7



49



22.5



58



50kg



### NO.

8800-1-1U-K  
8803-1-1U-K  
8808-1-1U-K  
8801-1-1U-K

-----  
Ø 11 x 22mm  
Ø 10 x 22mm  
Ø 10 x 30mm

67  
70.5  
70.5  
67

-  
22  
22  
30

### BLACK - SOFT TYRE GRX6518BU C-LINE



### NO.

8800-64-64-T1U-K  
8803-64-64-T1U-K  
8808-64-64-T1U-K  
8801-64-64-T1U-K

-----  
Ø 11 x 22mm  
Ø 10 x 22mm  
Ø 10 x 30mm

67  
70.5  
70.5  
67

-  
22  
22  
30

### RAL 9006 - SOFT TYRE GRX6518BU C-LINE



### NO.

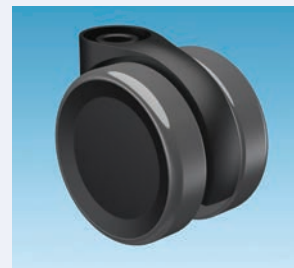
6100-1-1U-K  
6103-1-1U-K  
6108-1-1U-K  
6101-1-1U-K

-----  
Ø 11 x 22mm  
Ø 10 x 22mm  
Ø 10 x 30mm

70  
72  
72  
70

-  
22  
22  
28.5

### BLACK - SOFT TYRE GRX6528BU C-LINE



### NO.

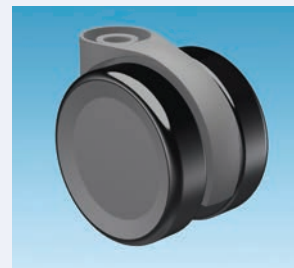
6100-64-64-T1U-K  
6103-64-64-T1U-K  
6108-64-64-T1U-K  
6101-64-64-T1U-K

-----  
Ø 11 X 22mm  
Ø 10 X 22mm  
Ø 10 X 30mm

70  
72  
72  
70

-  
22  
22  
28.5

### RAL 9006 - SOFT TYRE GRX6528BU C-LINE



### GRX6518BU C-LINE

Ø 11 x 22mm



Ø 10 x 22mm



Ø 10 x 30mm



### GRX6528BU C-LINE

Ø 11 x 22mm



Ø 10 x 22mm



Ø 10 x 30mm



# GRX6536BU C-LINE & GRX6541BU C-LINE BRAKE UNLOADED CASTORS

## SPECIFICATION

### CASTOR TYPE

Brake Unloaded

### MATERIALS

Castor PA  
Soft Tyre PUR

### STANDARD COLOURS

Black  
Aluminium RAL 9006

### STANDARDS

EN 12529 TYPE U

## TECHNISCHE DATEN

### ROLLEN TYP

Lastabhängig Gebremst

### MATERIAL

Rollen PA  
Weiche Lauffläche PUR

### STANDARDFARBEN

Schwarz  
Aluminium RAL 9006

### NORMEN

EN 12529 TYP U

## SPECIFICATION

### TYPE DE ROULETTE

Autofreiné

### MATIERES

Roulette PA  
Bandes Souples PUR

### COLORIS STANDARD

Noir  
Alu RAL 9006

### NORMES

EN 12529 TYPE U

## ESPECIFICACION

### TIPO DE RUEDA

Autofrenado

### MATERIALES

Rueda Nilón  
Rodadura Blanda Poliuretano

### COLORES ESTANDAR

Negro  
Plateado RAL 9006

### NORMAS

EN 12529 TIPO U



65



70



36 & 41



7



49



22.5



58



50kg



### NO.

8100-1-1U-K  
8103-1-1U-K  
8108-1-1U-K  
8101-1-1U-K

-----  
Ø 11 x 22mm  
Ø 10 x 22mm  
Ø 10 x 30mm

70  
72  
72  
70

-  
22  
22  
28.5

### BLACK - SOFT TYRE GRX6536BU C-LINE



### NO.

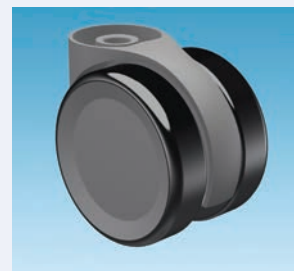
8100-64-64-T1U  
8103-64-64-T1U  
8108-64-64-T1U  
8101-64-64-T1U

-----  
Ø 11 x 22mm  
Ø 10 x 22mm  
Ø 10 x 30mm

70  
72  
72  
70

-  
22  
22  
28.5

### RAL 9006 - SOFT TYRE GRX6536BU C-LINE



### NO.

4300-1-1U-K  
4303-1-1U-K  
4308-1-1U-K  
4301-1-1U-K

-----  
Ø 11 x 22mm  
Ø 10 x 22mm  
Ø 10 x 30mm

70  
72  
72  
70

-  
22  
22  
28.5

### BLACK - SOFT TYRE GRX6541BU C-LINE



### NO.

4300-64-64-T1U-K  
4303-64-64-T1U-K  
4308-64-64-T1U-K  
4301-64-64-T1U-K

-----  
Ø 11 x 22mm  
Ø 10 x 22mm  
Ø 10 x 30mm

70  
72  
72  
70

-  
22  
22  
28.5

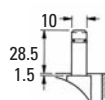
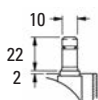
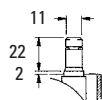
### RAL 9006 - SOFT TYRE GRX6541BU C-LINE



Ø 11 x 22mm

Ø 10 x 22mm

Ø 10 x 30mm



## SPECIFICATION

### MATERIALS

Steel BZP

## TECHNISCHE DATEN

### MATERIAL

Stahl Verzinkt

## SPECIFICATION

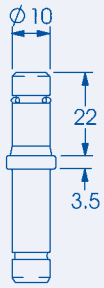
### MATIERES

Acier, plaqué de zinc

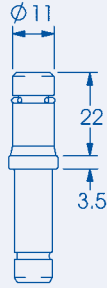
## ESPECIFICACION

### MATERIALES

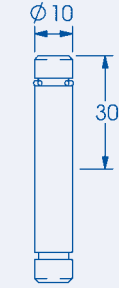
Acero chapado de zinc



No.1957P



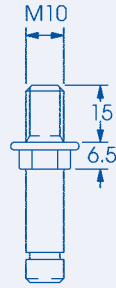
No.1954P



No.1950P



No.1966P



No.H552P

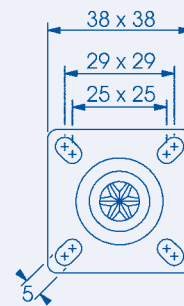


PLATE FIXING  
No.1959-9209

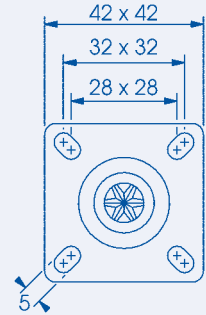


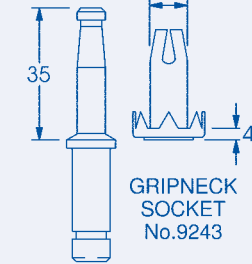
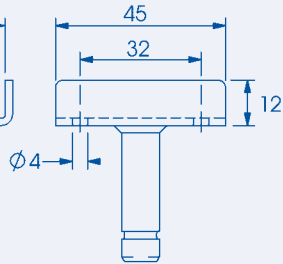
PLATE FIXING  
No.1959-9211



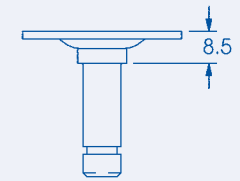
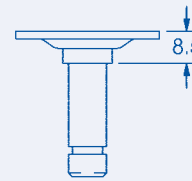
15mm "U" BRACKET  
No.9200-1958



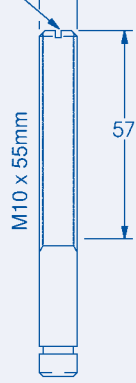
18mm "U" BRACKET  
No.9201-1958



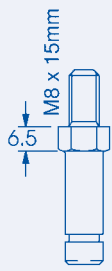
GRIPNECK STEM  
No.1990P



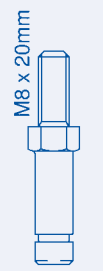
SCREWDRIVER SLOT  
M10



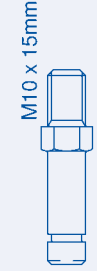
M10 x 55mm  
No.1855P



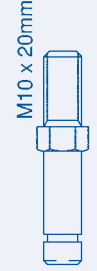
M8 x 15  
No.1946P



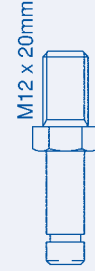
M8 x 20  
No.1947P



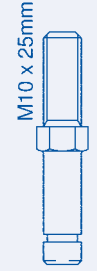
M10 x 15  
No.1955P



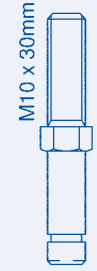
M10 x 20  
No.1962P



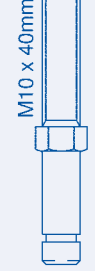
M12 x 20  
No.1983P



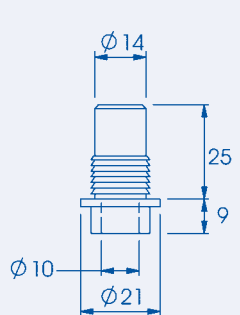
M10 x 25  
No.1963P



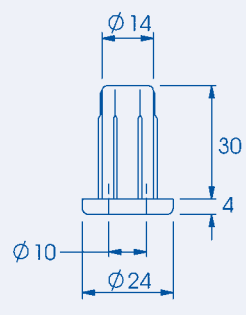
M10 x 30  
No.1945P



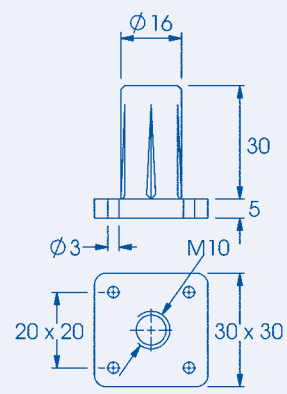
M10 x 40  
No.1968P



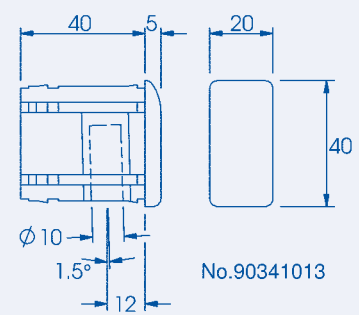
No.9309-1



No.95301013



No.9541-1



No.90341013